

# Training the Technicians of Tomorrow For the Dealers of Tomorrow



John Deere Program Coordinator *Larry Bland*

Office 1-812-888-6243

Email [lbland@vinu.edu](mailto:lbland@vinu.edu)

## Table of Contents

Table of Contents	2
VU John Deere Ag Tech Mission Statement	3
Dealer Benefits	4
Course Descriptions	5
Student Admission Requirements	10
FAQ Sheet	11
Required Tool List	12
Responsibilities	14
Scholarship Opportunities	16
Campus Maps	17
Housing	18
Are You Ready to Start	20





## Vincennes University John Deere Tech

### MISSION STATEMENT

#### Mission Statement

The mission of the Vincennes University John Deere Tech program is to equip students with the knowledge and skills for employment as a service technician in a John Deere dealership. We strive to provide an extensive John Deere classroom curriculum with hands-on laboratory assessments and on-the-job training. With our John Deere partnership, we are able to provide the latest John Deere based diagnostic tools for the students to learn and prepare for their service technician role. Upon graduation, students will be prepared to enter the workforce as an apprentice technician within the John Deere Agriculture network of dealers. Students will also have their John Deere core certifications completed.

#### Program Learning Outcomes

Students who complete course work in the John Deere Tech program will be able to:

- Use electronic media for retrieval of technical repair information.
- Evaluate diagnostic procedures.
- Perform repair procedures correctly in an efficient time frame.
- Employ communication and language skills as it relates to John Deere Technology.



## *Dealer Benefits*

- John Deere trained entry level technician
- Training cost savings
- Core certified

# COURSE DESCRIPTIONS John Deere Tech

## Semester 1 Fall

### **DESL 110 Diesel Electrical 3 hrs**

This course addresses the fundamental theories of electricity and electronics as applied to diesel and heavy equipment. Diagnosis and repair of basic battery, starting, charging, lighting, accessories, and wiring systems will be covered. Utilization of analog and digital meters, wiring diagrams, and other diagnostic tools will be stressed. 3 lecture hours.

### **DESL 110L Diesel Electrical Laboratory 1 hr**

This course is a hands-on course that introduces the student to diesel and heavy equipment electrical theory, batteries, charging systems, starting systems, wiring repairs, lighting systems and accessories. 3 laboratory hours.

### **DESL 140 Diesel Hydraulic Systems 2 hrs**

The study of hydrostatic and hydrodynamic system theory of operation, including gear, piston pumps spool, poppet, and electro-hydraulic valves problem diagnosis and repair procedures. 2 lecture hours.

### **DESL 140L Hydraulic Systems Laboratory 2 hrs**

This is a hands-on course that introduces the student to the repair and troubleshooting of hydrostatic and hydrodynamic systems. The course will include the repair of gear and piston type pumps, spool, poppet, and electro-hydraulic valves. 6 laboratory hours.

### **DEER 150 John Deere Commercial and Consumer Products 2 hrs**

Instruction presents the theory and work activities relating to diagnostic procedures, adjustments, and parts repair or replacement in law and grounds care equipment as well as skid steer loaders, chain saws, and gas trimmers. Major emphasis on John Deere equipment. 2 lecture hours.

### **DEER 150L John Deere Commercial and Consumer Products Laboratory 1 hr**

This course involves hands-on activities relating to diagnostic procedures, adjustments, and parts repair or replacement in lawn and grounds care equipment as well as skid steer loaders, chain saws, and gas trimmers. Major emphasis is placed on John Deere equipment. 3 laboratory hours.

### **ENGL 101 - English Composition I 3 hrs**

English Composition I is a college-level course in critical reading and writing designed to help students develop their ability to think critically, to organize their thoughts, and to express ideas clearly and effectively. The course will focus on the various modes of expository writing, such as process, description, narration, comparison, cause/effect, and analysis, and give significant focus to argumentation. Students will be introduced to documentation. Numerous in-class assignments are required in addition to extended essays written outside of class. Required of all students. *This course is a transferIN course.*

**100-level or higher Mathematics (MATH or MATT) Elective 3 hrs**

## **Semester 2 Spring**

### **DESL 130 Diesel Engine Systems 3 hrs**

Instruction presents engine operating principles and theories as well as Diesel Fuel Systems and hands-on training related to modern diesel engines. Students will learn inspection, troubleshooting, overhaul and engine replacement procedures. 3 lecture hours.

### **DESL 130L Diesel Engine Systems Laboratory 3 hrs**

This is a hands-on course that introduces the student to the repair of modern diesel engines. The course will include inspection, troubleshooting, overhaul, and engine replacement procedures. 9 laboratory hours.

### **DESL 240 Diesel Electronic Systems 3 hrs**

A continuation of DESL 110 which addresses the diagnosis and repair of various electrical and electronic systems commonly found on vehicles today. Electrical/electronic troubleshooting will be stressed.

### **DESL 240L Diesel Electronic Systems Laboratory 2 hrs**

This is a hands-on course that introduces the student to the diagnosis and repair of various electrical and electronic systems commonly found on modern vehicles. Electrical/Electronic troubleshooting will be stressed. 6 laboratory hours.

### **COMM 143 - Speech 3 hrs**

Introduces fundamental concepts and skills for effective public speaking including audience analysis, outlining, research, delivery, critical listening and evaluation, and the use of visual aids/technology. *This course is a transferIN course.*

## **Semester 3 Summer**

### **DEER 161 Agricultural Machinery 1 hr**

The study of the operation and design of various agricultural equipment to include tillage, planting, and harvesting equipment. Students will perform adjustment and maintenance activities using appropriate service manuals. 1 lecture hour.

### **DEER 161L Agricultural Machinery Laboratory 2 hrs**

This course involves hands-on activities relating to agricultural equipment including tillage, planting, and harvesting equipment. Students will perform adjustment and maintenance activities using appropriate service programs. 6 laboratory hours.



**DESL 230 Diesel HVAC 2 hrs**

This course will address theory, diagnosis, and repair of modern heating, ventilation and air-conditioning systems in diesel and heavy equipment. Environmental concerns related to service, recycling and recovery of materials will be stressed. Laboratory activities will present “major specific” topics. 2 lecture hours.

**DESL 230L Diesel HVAC Laboratory 1 hr**

This course involves hands-on activities that introduce the student to the repair of heating, ventilation and air conditioning systems in diesel and heavy equipment. 3 laboratory hours.

**SOCL 141 - Applied Sociology 3 hrs**

Applied Sociology will discuss the practical application of sociological principles and theories and their relationship to life situations. The study of behavior, values, socialization, and effective methods of interacting with other people and dealing with social situations will be the main focus. The study will include the areas of workplace and social situations as part of the focus on various principles to develop human relation skills that will be useful in a diverse society

## Semester 4 Fall

**DEER 190 - Cooperative Work Experience 3 hrs**

Students will be employed ten weeks at sponsoring dealerships. This time will be during the summer between the first and second year. Designated objectives, agreed upon by Vincennes University, the dealership and students will be assigned by the dealership. VU faculty will visit dealerships during this time to check on progress on objectives. A minimum of 400 hours of on-the-job training is required.

**DESL 215 Diesel Drive Trains 3 hrs**

Instruction presents theory and work activities relating to the transfer of power from the engine to the drive wheels. Troubleshooting, repair, replacement, adjustment, and preventative maintenance procedures will be presented for the service of clutches, driveshafts, differentials, drive axles, standard and automatic transmissions. 3 lecture hours.

**DESL 215L Diesel Drive Trains Laboratory 2 hrs**

This is a hands-on course that introduces the student to the repair, inspection, adjustment and replacement of clutches, driveshafts, differential assemblies, and transmissions.

6 laboratory hours.

### **CHMT 100 Fuels, Lubricants, and Coolants 4hrs**

Source, refining and design of petroleum products; artificial or man-made oils, lubricants, and coolants. 3 lecture hours, 2 laboratory hours.

### **HLTH 211 – First Aid 2 hrs**

This course is designed to provide an introduction to basic first aid and emergency response procedures. National standards for First Aid and CPR will be covered and represents the minimal course guidelines. Students who qualify will receive certifications in CPR, AED, and First Aid Basics by one of the nationally accredited certifying agencies. *This course is a transferIN course*

## **Semester 5 Spring**

### **DEER 237 Advanced Hydraulics 3 hrs**

An advanced study of hydraulics, system flows, and circuits of current and older equipment as well as radial and axial piston pumps, electro-hydraulic valves, and the use of test equipment to solve problems on current agricultural equipment. Theory and operation are to be explained. Major emphasis on John Deere equipment. 3 lecture hours.

### **DEER 237L Advanced Hydraulics 2hrs**

This course involves hands-on activities related to hydraulic system flows and circuits of current and older equipment as well as radial and axial piston pumps, electro-hydraulic valves; and the use of test equipment to solve problems on current agricultural equipment. Major emphasis is placed on John Deere equipment. 6 laboratory hours.

### **DEER 270 Advanced Diagnostics 3 hrs**

Course addresses John Deere advanced electrical and hydraulic diagnostics. This course also includes component and system diagnostics for global positioning systems. 3 lecture hours.

### **DEER 270L Advanced Diagnostics Laboratory 1 hr**

This course involves hands-on activities that are directly related to advanced electrical and hydraulic diagnostics as well as component and system diagnostics for global positioning systems. Major emphasis is placed on John Deere equipment.

### **ECON 208 - Personal Financial Management 3 hrs**



A study of the financial concerns of individuals and families. Included are family budgeting, insurance decisions, estate planning, installment buying, investment planning, and tax problems. *This course is a transferIN course.*

## Semester 6 Summer

### ENGL 108 Technical Writing 3hrs

A course designed to provide students of technology with the communication skills that enable them to compose effective, precise, concise, technical reports. *This course is a transferIN course.*



# STUDENT ADMISSION REQUIREMENTS

## Admission for Degree-Seeking Students

Admission as a student to Vincennes University leading to a degree or technical certificate requires either: a high school diploma (request transcript using Parchment.com), or an official General Educational Development (GED) or

Test Assessing Secondary Completion (TASC) transcript, or 24 hours of postsecondary credit from a regionally-accredited institution.

If you're interested in VU acquiring your high school transcripts on your behalf, please print this form and submit it to the Admissions Office.

## Registration Eligibility

Applicants with a high school diploma that was not earned through a Graduation Qualifying Exam (GQE) must demonstrate their college readiness before being allowed to register for classes. College readiness can be proven by presenting postsecondary credit for college level English or math from a regionally-accredited institution or by obtaining a minimum score as designated by the U.S. Department of Education on one of the three subtests of the Accuplacer placement exam, provided free of charge by VU. Applicants may instead submit achievement of the minimum scores on any of the other tests approved by the U.S. Dept. of Education to document an applicant's college readiness (view list of tests and required minimum scores).

Applicants who are not eligible for registration may appeal to the Director of Admissions to have their application reviewed for provisional acceptance.

Vincennes University maintains an open door admissions policy but reserves the right to deny admission and/or registration based on the individual's ability to benefit from available educational services. It is strongly recommended that students meet the Indiana Core 40 curriculum requirements, but it is not required for admission.

Applications should be completed on line or paper copy and mailed on or before June 1 for fall admission.

## Questions should directed to Vincennes University

Office of Admissions

1002 North First Street

Vincennes, IN 47591

Office: 812.888.4313

Toll Free: 800.742.9198

Fax: 812.888.5707

Email: [vuadmit@vinu.edu](mailto:vuadmit@vinu.edu)

Student will be required to obtain a John Deere dealer sponsor

## FAQ

### **Why is Hands-On Experience Important?**

Classroom knowledge is best supported with real hands-on experience. The U.S. Bureau of Labor Statistics reports that career opportunities for those with formal training in this industry are "excellent" and that those without such training will face competition.

### **How much hands-On experience will the student have?**

As much as 75% of a course.

### **Do students need their own tools?**

Tools will be furnished by VU during on campus classes. Tools are required for each student while at the sponsoring dealer during on the job training, tools are available at discounted rates to VU students.

### **Are Residence Halls on campus?**

Yes, there are seven

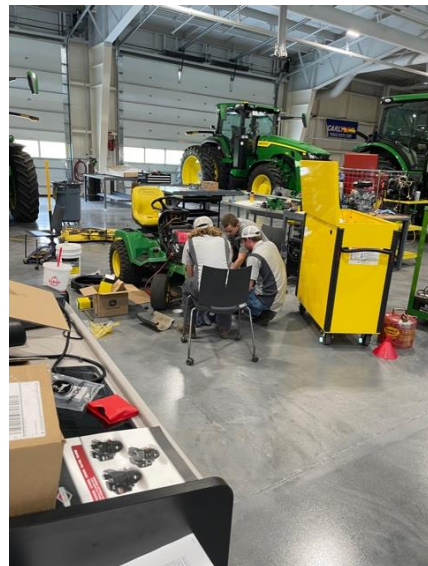
### **Do students need their own transportation?**

Yes, The John Deere Training center is located about four miles north of the main campus at 4259 N. Purdue Road, Vincennes, IN

### **Are there safety and dress regulations?**

Defiantly, we follow safety regulations and policies very closely.

Safety is a topic in each and every class.



## STUDENT TOOL REQUIREMENTS for OJT

Tool storage should be large enough to allow the separation of tools to allow the student to work efficiently without spending unnecessary time locating proper tools. All tools should be marked with a personal identification mark. Extra tools may be required if the need arises.

INSURANCE COVERAGE OF TOOLS AND OTHER PERSONAL ITEMS

ARE THE RESPONSIBILITY OF THE STUDENT

### Tool chest

Tool chest	Adjustable joint
1/4" Drive socket set	1 - 10" Locking
3/16" - 1/2" Standard depth	Needle nose
3/16" - 1/2" Deep	Side cutters
4mm - 13mm Standard depth	Slip-joint
4mm - 13mm Deep Extensions, short, medium, long	Snap-ring flat 1 3/4" Min. opening
Ratchet handle Universal joint	Small internal/external snap-ring pliers
3/8" Drive socket set	Large internal/external snap-ring pliers
3/8" - 3/4" Standard depth	Screwdrivers
3/8" - 3/4" Deep	Blade type
10mm - 19mm Standard depth	1"
10mm - 19mm Deep Extensions, short, medium, long	6"
Ratchet handle	9"
Universal joint	12"
3/8" - 3/4" Flexible socket	1/2" - 1 1/8" Standard depth
Torque wrench 0 - 250 IN - LB	1/2" - 1 1/8" Deep
1/2" Socket set	13mm - 32mm Standard DEPTH
Allen wrenches	13MM - 32MM Deep Extensions, short, medium, long
.050" - 3/8" Allen wrench 2mm - 12mm metric	Ratchet handle
T - 15 - T 55 Torx wrench set	Universal joint
Pliers	

Breaker bar

Torque wrench 0 - 250 FT LB

Combination wrenches

3/8" - 1 1/4" Standard

6mm - 26mm metric

Off-set

Phillips

1" # 2

6" # 1, # 2

12" # 3

1 - 16 OZ Ball Peen hammer

1 - 2 1/2 # Dead blow hammer

3/16 - 3/8 Pin punches

5" Center punch

3/16 - 3/8" Starter punches

Brass punch

.005 - .050" Feeler gauges straight and angle

.005mm-.070mm Feeler gauge straight and angle

Rolling head bar

Hearing protection

15" aligning bar Cotter key extractor

Gasket scraper 1" wide Wire brush

Wire crimper - stripper

Measuring tape - 12 foot

Safety glasses Magnetic pickup tool  
(telescoping)

Work gloves

Flash light

**The following must be of high quality**

Truck style tire gauge Dial caliper 0 - 6"

Truck air chuck Micrometer 0 - 1"

O-ring pick set

Dial indicator

10" Adjustable wrench

Snap gauges

Small bore gauge

Fluke Digital Multimeter

## **Responsibilities**

### **John Deere Company**

- Encourage dealer cooperation and support
- Provide training for John Deere Tech instructors
- Furnish the school with John Deere training equipment
- (manuals, components, essential tools, and related goods) Assist college and dealers with recruiting

### **John Deere Dealers**

- Indicate your interest in being a participating dealer so your dealership name can be made available to interested students
- Interview and select students that the dealership will hire
- Provide appropriate work experience which reinforces the trainee's most recent classroom instruction.
- Provide student/employee with uniforms in a manner consistent with other dealership employees.
- Dealership is required to pay students during any work study or related experience at the dealership
- Provide the student with a valid John Deere RACF id

### **Student**

- Submit high school transcript or GED scores to the Admission office
- Apply and complete requirements for admission to VU
- Obtain and maintain a dealership sponsor
- Wear John Deere uniforms and safety equipment while on campus and during supervised occupational work experiences at the sponsoring dealer
- Pay for program costs: tuition, fees, books, and tools
- Successfully complete all classes in the order listed

### **Vincennes University**

- Maintain a current curriculum
- Provide a dedicated classroom and laboratory
- Provide trained instructors
- Provide equipment and tools for students to use at VU classes
- Promote, advertise, and recruit qualified student candidates
- Test applicants and assist dealers with student selection for the program
- Maintain all student records



- Provide customary student services such as academic advisement, financial aid, counseling, etc.
- Furnish program information when requested
- Conduct student visitations during supervised occupational experience courses.



## Scholarship Application

The VU Foundation awarded a record \$1,465,903 scholarship dollars of VU Foundation and University funds for the 2015-2016 school year to incoming and returning VU students. These included awards to students from 8 states across the country and 3 international awards. Currently, the VU Foundation manages over 525 scholarship and department funds, with 247 new funds created in just the last 9 years.

The VU Foundation and Alumni staff operate from the Louie O. Dayson Foundation and Alumni Center at the corner of Third Street and College Avenue on the Vincennes University Campus.

Office hours are 8:00a.m. - 4:30p.m., Monday through Friday.

Our contact numbers are:

Foundation - 812.888.4510/877.300.6992

Alumni - 812.888.4354/800.945.ALUM (2586)

Fax - 812.888.5942

[vufdn@vinu.edu](mailto:vufdn@vinu.edu)

[vuscholarships@vinu.edu](mailto:vuscholarships@vinu.edu)

Visit this site for a complete scholarship application.





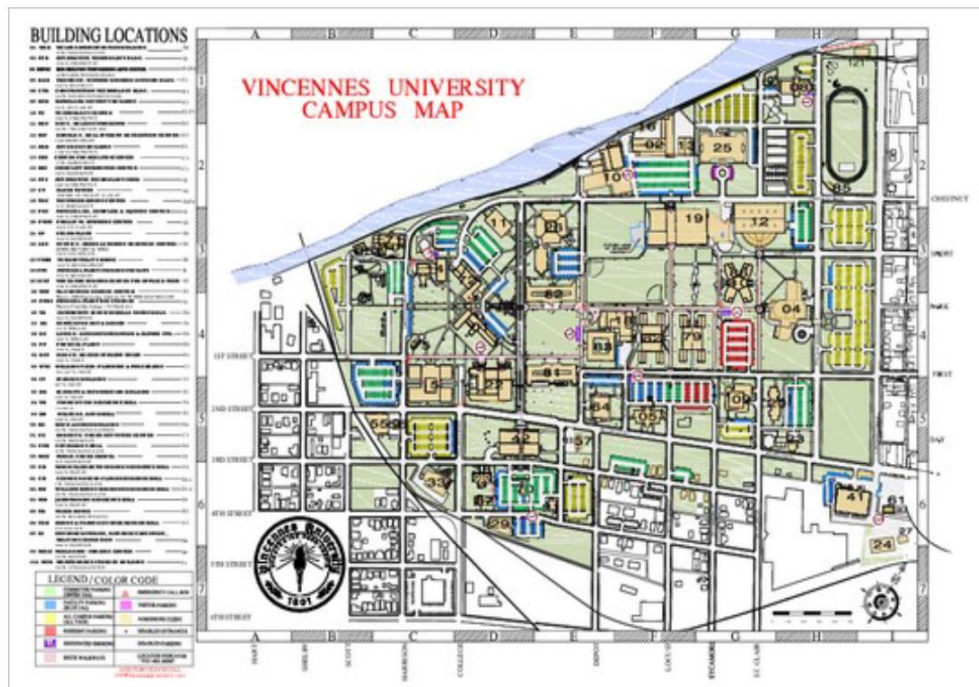
## Campus Map

Vincennes University's Diesel Technology Center  
and  
The AG Center are located at:  
4259 North Purdue Road  
Vincennes, Indiana 47591



A map of the Vincennes University main campus may be found at the following  
web address

<https://www.vinu.edu/vincennes-campus>



# Housing

## Residence Halls

### Clark Hall



Co-Ed housing, private and handicap accessible suites and 2 bedroom-4 person suites. Suites include a small living area.

### Ebner Hall



VU's first living/learning community. Male students in the Technology field and female students in STEM majors can live in the building where a majority of their classes are held.

### Godare Hall



Single sex or coed housing depending upon current enrollment needs. Rooms for 2 persons, computer facilities, laundry facilities, kitchenette, and areas for study.

### Morris Hall



Containing two-person rooms, it is used for either coeducational or single sex housing depending on enrollment. A computer lab and recreation room are available for student use.

### Vanderburgh Hall



Only all-female hall on the Vincennes Campus. Each suite is comprised of two rooms joined by a master bath. Study and television lounges, a computer room, a kitchenette, and laundry facilities.

### Vigo Hall



Used for either single sex or coeducational housing, depending on the current enrollment needs. The hall contains rooms for two, study lounges, a computer lab, kitchen, laundry, and areas for study.



## VU Apartments

### Third Street Apartments



Experience off campus living with your friends in town-homes and duplexes managed by Vincennes University. Options range from 4 bedrooms up to 7.

### French Quarter Apartments



The French Quarter is a one of a kind property featuring units with 3 private bedrooms/bathrooms with walk-in closets.



## Are your students ready?

- Complete and submit application to VU
- Obtain John Deere dealer sponsor
- Receive acceptance letter
- Wait to receive letter regarding campus orientation, placement testing, and class registration
- Arrive on campus on assigned date as listed in above letter. This will be a full day – be well rested and alert for placement testing, and arrive on time.
- While on campus for testing on assigned date, meet with your advisor to register for classes. Write down any questions ahead of time that you may have in order to discuss them with
- Your advisor at this time.
- While on campus on assigned date for placement testing and registration, many tool suppliers will be available for you to place your tool orders at a highly discounted cost. Suppliers will only be available on this date.







## John Deere Tech Program Supervised Occupational Experience Agreement

The intent of this agreement is to make sure there is a basic understanding between the dealership, Vincennes University, and the JD Tech Student about what is expected of them during their tenure at school and their work experience periods.

### The agreement regards the following JD Tech Student:

Student Name: \_\_\_\_\_

Address  
\_\_\_\_\_

Cell Phone \_\_\_\_\_

Sponsoring Dealer Name: \_\_\_\_\_

Address \_\_\_\_\_

Phone \_\_\_\_\_ Email \_\_\_\_\_

Student John Deere User ID \_\_\_\_\_ Dealer John Deere Account number \_\_\_\_\_

- On-the-job training will extend for approximately 8 weeks during semester II, III, Summer I and semester IV, with a minimum of 40 hours per week. At the end of this period, this agreement will be terminated.
- Minimum wage must be paid during this time unless a higher wage is agreed upon between the student and employer.
- Training during the work experience shall be progressive. It shall provide for the trainee's passing from one experience to another so that the trainee may become exposed to different phases of the occupation. Common safety practices shall be adhered to.
- The student will complete an on the job training competently workbook during the OJT sessions.
- The student may be dismissed for job failure at the employer's discretion based on policies and practices outlined in the handbook.
- Parties participating in this program will not discriminate in employment opportunities on the basis of race, sex, national origin, handicap, or religion.
- The dealer will furnish work uniforms for the student during the school years for use in labs and during the summer work co-op. Students will be required to follow company dress code policies while on site and while at VU.
- Maintain a C or higher in all classes during the JD TECH training program.
- Will maintain a valid Driver's License during the entire program.



I, \_\_\_\_\_ (student name), grant permission to Vincennes University to share my high school transcripts 9 grades), pre-admission test results, VU grades and interview data with sponsoring dealer and John Deere Company, NAAMC, Lenexa, KS, and

\_\_\_\_\_ (Dealership Name).

Students printed name \_\_\_\_\_

Student's Signature: \_\_\_\_\_ Date: \_\_\_\_\_

Employer's printed name \_\_\_\_\_ Title: \_\_\_\_\_

Employer's Signature: \_\_\_\_\_ Date: \_\_\_\_\_